

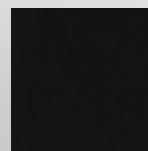
Heritage

DENTALEZ

ACT NOW FOR SHIPMENT
IN AS LITTLE AS 2 WEEKS!*

Plus get a **\$3,000** rebate!

Upholstery Options



Black
US-393



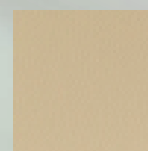
Cocoa
PR-51



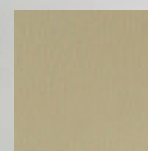
Deep Sapphire
PR-55



Saddle
PR-52



Sand
US-384



Taupe
US-410



Scan the QR code
or click to fill out the
rebate form online



Scan the QR code
or click to see the
rebate details



See Additional Package
Options on the Next Page.

CORE™ Chair

- Simple adjustments put patients in the ideal position
- Quiet, dependable and smooth operation
- Double articulating headrest
- Tapered back
- Fully hydraulic, four programmable positions (1 touchpad standard)

Galaxy® Delivery Unit

- BioFree tubing on all internal water lines and handpiece tubings
- Die cast aluminum pinch valve system providing years of reliable performance
- 3 automatic handpiece positions with 3 way syringe
- 4th handpiece position available
- 5th position available for auxiliary products

Simplicity™ LED Light

- Smooth rotation and 3 axis adjustment allow for a wide range of light positioning to better view the oral cavity

*While supplies last

Orders must be submitted by Dec. 31st, 2022

Product must ship by 1/31/2023

Rebate claim must be submitted within 45 days of invoice

NOTE: Image shown contains optional handpieces and upgraded features:
CORE Rear Mounted Assistant's Instrumentation 3625-929 and Wired Foot Control 3613-127

BASE MAGELLAN PACKAGE

Description	Part Number	Retail Price
CORE™ Chair (seamed upholstery with 6 color options)	3706-284PT	\$8,585
Galaxy Magellan Unit	3655-314G	\$8,170
Simplicity™ LED	3544-234	\$3,025
Light Post	3625-817	\$615
Contoured USC	3625-936	N/C

STANDARD PACKAGE TOTAL PRICE: \$20,395

Alternate Chair and Delivery Unit Options:

Description	Part Number	Retail Price
CORE Magellan Unit	3655-358	\$5,350

Additional Options:

Description	Part Number	Retail Price
CORE Rear Assistant's Arm with CORE Touchpad	3625-931	\$1,225
CORE Rear Assistant's Arm without Touchpad	3625-929	\$1,030
Wired Foot Control	3613-127	\$495
Designer Seamed Ultraleather Upholstery Upcharge	3625-924	\$1,125
Single 6-pin FO System	3625-899X1	\$890
Additional HVE and Tubing	3625-536	\$145
Water Outlet w/Flow Control and QD for CORE chair	3680-437	\$265
Simplicity Doctor's Stool	3554-202	\$680
Simplicity Assistant's Stool	3554-203	\$1,085
Generation Doctor's Stool	3554-198	\$1,135
Generation Assistant's Stool	3554-199	\$1,330

Delivery Unit-Specific Options:

Description	Part Number	Retail Price
Galaxy Unit:		
Integrated Star ETorque for Galaxy Unit	3680-438	\$5,010
Galaxy Unit Touchpad for CORE Chair	3655-373	\$435
4th Handpiece for Galaxy Unit	3680-338	\$565
CORE Unit:		
Integrated Star ETorque for CORE Unit	3680-441	\$4,965
CORE Unit Touchpad for CORE Chair	3655-362	\$660
4th Handpiece for CORE Unit	3680-428	\$570



CORE™ Delivery Unit with Optional Touchpad and Handpieces
3655-358



CORE L/R Assistant's Instrumentation with Touchpad
3625-931



Integrated Star® ETorque
3680-438 (Galaxy)
3680-441 (CORE)



Delivery unit touchpad
3655-373 (Galaxy)
3655-362 (CORE)