

# TITAN LOW-SPEED Star

## BALL BEARING FRICTION GRIP CHUCK ANGLES

TITAN 3 LUBEFREE BB FG AUTOCHUCK  
TITAN 3 LUBRICATED BB FG AUTOCHUCK  
TITAN-T LUBEFREE BB FG AUTOCHUCK  
TITAN 3 LUBEFREE BB FG MANUAL CHUCK

NON-STERILE MEDICAL DEVICE

Rx ONLY  
CE 0344

# DENTALEZ

EC REP

Emergo Europe  
Prinsessegracht 20 2514AP  
The Hague The Netherlands

DENTALEZ, Inc.,  
StarDental® Division  
1816 Colonial Village Lane  
Lancaster, PA 17601 USA

062734 Rev M Date of Issue 2021-04-30 ©2021 DENTALEZ, Inc.

### DO NOT USE FOR ORAL SURGERY

Before operating the angle, carefully read and follow all of these instructions. Save these instructions for future reference and observe all warnings and cautions.

### INDICATIONS FOR USE

Used intraorally by trained dental professionals for drilling and preparation of dental cavities for restoration, such as fillings, disking, cavity and crown preps, polishing, post and pin drilling and pin setting.

**WARNING** Under normal operating conditions, air is exhausted from the back of the head of this handpiece. If air is directed into an open soft tissue wound or beneath the mucosa or dermis, injury to the patient could result from air emphysema or air embolism.

**WARNING** This angle has no internal air or water cooling capabilities. External water for cooling may be required.

**NOTICE** Any serious incident occurring from the use of this device should be reported to StarDental immediately. If incident occurred in a EU Member State the Competent Authority must be notified.

### CONTENTS

FEATURES  
ANGLE ADJUSTMENT  
ANGLE INSTALLATION  
BUR INSTALLATION AND REMOVAL  
SAFETY INSTRUCTIONS  
LUBRICATION  
CARTRIDGE REPLACEMENT  
CLEANING AND STERILIZATION  
TROUBLESHOOTING  
REPLACEMENT PART NUMBERS  
WARRANTY

### FEATURES

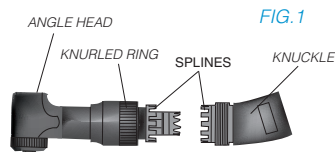
Rated for use with StarDental Motors and Attachments  
Easy Maintenance  
Friction Grip Auto Contra Angles  
Long Term Reliability  
Smooth Running, Low Friction Performance  
Steam sterilization: 275° F (135° C) max.  
Field Replaceable Cartridges and Transmission Gears

135°C  
SSS Sterilizable up to 135°C

Motor	5K	5K	20K	20K	20K
Accessories	MTA	16:1 Endodontic Motor to Angle Adapter	MTA	Torque Multiplier & MTA	Torque Multiplier & 16:1 Endodontic Motor to Angle Adapter
Ratio	1:1	16:1	1:1	4:1	64:1
Max Allowable RPM	5,000	300	20,000	5,000	300

### ANGLE ADJUSTMENT

- Loosen knurled ring enough to disengage splines.(Fig.1)
- Pull head assembly up; turn to desired position.
- Carefully mesh the splines on the knuckle with the splines of the head.
- Tighten knurled ring onto knuckle threads until snug.



### ANGLE INSTALLATION

- Thread angle onto the motor-to-angle adapter, StarDental Titan 3 Part #264073 or Titan T Part # 263970, by hand. Seat completely. (Fig 2)

NOTE: If angle does not seat on adapter, gears are not meshed correctly. Remove angle; spin motor-to-angle adapter drive gear and repeat Step 1.

- Fit angle disconnect wrench, StarDental Part #203048, furnished with every angle, to mating indentations on angle neck; tighten securely. (Fig.3)

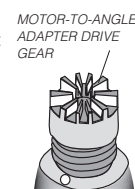


FIG.2

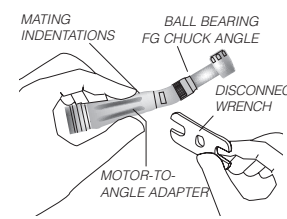


FIG.3

### BUR INSTALLATION AND REMOVAL

NOTE: A concentric .0630" diameter (1.60 mm) cylindrical shank (ISO 1797-1 Type 3) bur should be used.

NOTE: Before installing bur, install motor to the motor-to-angle adapter; then install friction grip chuck angle to motor-to-angle adapter as described in Angle Installation.

INSTALLATION into the Friction Grip Autochuck Angle (Fig 4)

- Insert bur into autochuck until resistance is felt.

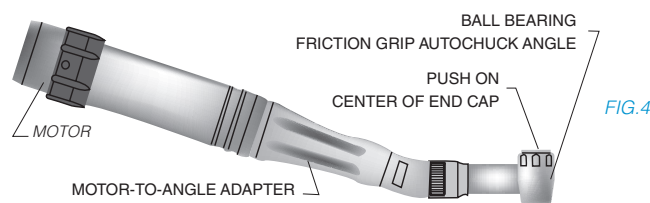


FIG.4

- Depress autochuck end cap button and continue to feed-in bur until it clicks and stops.
- Release end cap button. Now, apply light inward force to the dental bur. This will help set the chucking mechanism for initial start up. (Always tug on bur after it has been installed to confirm that it is secured.)

### REMOVAL FROM AUTOCHUCK

Grasp angle firmly so that your thumb touches the end cap and push until a slight click is felt. Pull bur straight out, then release end cap.

**CAUTION** Never depress the autochuck end cap button or rest the end cap against any part of the oral anatomy during handpiece operation. Depressing the end cap while a bur is rotating can activate the chuck mechanism and result in end cap heat-up and/or loss of bur retention.

### INSTALLATION INTO THE MANUAL CHUCK

- Pull handle back on manual bur tool, StarDental Part #203108, and slide open end of tool onto head of angle as shown in (Fig 5); release spring loaded handle and seat shaft of tool into the opening in the rear of angle head.
- To unlock chuck, turn manual bur tool handle counterclockwise.
- After inserting a 1.6 mm diameter friction grip bur fully into chuck, turn handle of tool clockwise to tighten chuck.
- Disengage tool and tug on bur to verify that it is completely engaged and holding securely.

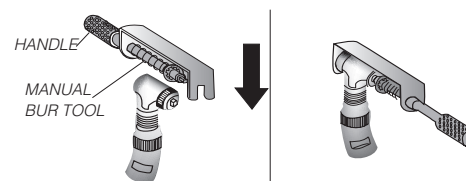


FIG.5

### REMOVAL FROM MANUAL CHUCK

Use manual bur tool and turn counterclockwise one full turn, 360° rotation. Pull bur straight out.

### SAFETY INSTRUCTIONS

#### WARNING

TO MINIMIZE RISK OF SERIOUS INJURY:

- Always insert bur the full length of the chuck. If you attempt to extend it from the chuck, the bur may dislodge during use and possibly injure you or your patient.
- Use only recommended burs to prevent damage to the autochuck and in some cases to prevent burs from improper or incorrect placement. An improperly clamped bur may dislodge during use, causing injury to you or your patient. A sudden high-pitched sound or increased vibration while handpiece is operating alerts the operator to the possibility that the chuck is not latched properly to retain the bur or a bent bur is inserted.

#### CAUTION

TO MINIMIZE RISK OF INJURY OR DAMAGE TO ANGLE:

- Replace cartridge when handpiece does not run at full speed or runs noisily.
- Follow these safety instructions:
  - Confirm bur is secure by tugging on it after it is loaded
  - Verify concentric rotation by operating handpiece outside oral cavity. Do not use if it does not run concentrically or runs with excessive noise.
  - Do not operate angle without an installed bur.
  - Always use burs with overall length of less than 24mm. Shank length must be at least 7.3mm.
  - When using autochuck angle, never depress end cap while bur is rotating.

### LUBRICATION - For Lubricated Angles ONLY

LUBRICATE THE TRANSMISSION GEAR DAILY

- To disassemble angle: unthread knurled ring. Remove knuckle and transmission gear from angle head.
- Place a drop of DentaLube II in the two transmission gear joints between the gear and gear housing and a drop of DentaLube II in the hole in the center of the gear housing. Rotate the gears to allow DentaLube II to work into the bearings. Apply a light coat of DentaLube II to the gear teeth. (Fig.6)
- To reassemble angle, insert transmission gear into angle head. Engage splines of knuckle with mating splines of head to achieve proper alignment.
- Tighten knurled ring onto knuckle threads until snug.
- Place angle on motor, connect to handpiece tubing; insert bur and run for 20 seconds to evenly distribute lubricant and disperse any residual lubricant.
- Proceed to Cleaning & Sterilization procedures before use.

**NOTICE** LubeFree Angles denoted by having 3 rings on neck are lubricated for life. Never clean ultrasonically or immerse in solvent that would dilute the lubricant.

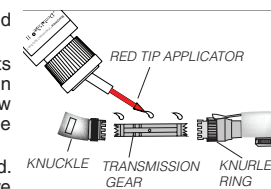


FIG.6

### CARTRIDGE REPLACEMENT

REPLACEMENT OF THE AUTOCHUCK CARTRIDGE

- Unthread knurled ring.
- Remove knuckle and transmission gear from head.
- Unthread end cap using end cap wrench(Fig.7), StarDental Part #261339.

NOTE: Remove transmission gear first before removing cartridge from head.

- Pushing from the front of the head, remove the cartridge by using a 1/16" pin (Fig.8).
- Clear housing of all dirt, debris, and/or remaining parts of previous cartridge. Insert new cartridge by installing gear and small bearing end first. Slide cartridge into housing with alignment tab of cartridge mating with groove in head. Install end cap.
- To reassemble angle, insert transmission gear into angle head. Engage splines of knuckle with mating splines of head to properly align.
- Tighten knurled ring onto knuckle threads until snug.

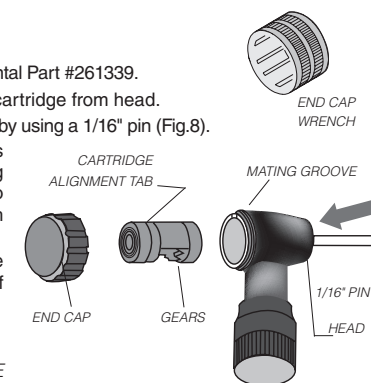


FIG.8

REPLACEMENT OF THE MANUAL CHUCK CARTRIDGE

- Unthread knurled ring.
- Remove knuckle and transmission gear from head.
- Unthread end cap using plastic wrench (Fig.10).
- At rear of head, push out old cartridge using a 3/32" pin (Fig.11).
- Clear housing of all dirt, debris, and/or remaining parts of previous cartridge. Insert new cartridge with alignment tab of cartridge and gears toward end cap and align with mating groove in head. Install end cap.
- To reassemble angle, insert transmission gear into angle head. Engage splines of knuckle with mating splines of head to achieve proper alignment.
- Tighten knurled ring onto knuckle threads until snug.

NOTE: Remove transmission gear first before removing cartridge from head (Fig.9).

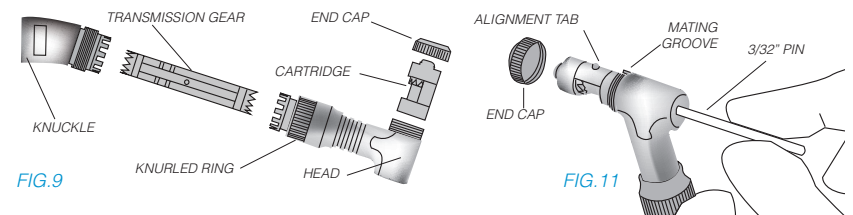


FIG.9

FIG.11

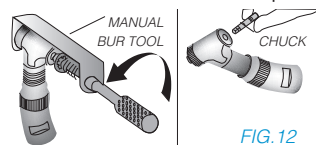
## CLEANING AND STERILIZATION

<b>CAUTION</b>	It is the responsibility of the user to use only FDA compliant sterilizing equipment and accessories that are capable of meeting the manufacturers recommendations below.
<b>CAUTION</b>	Do not exceed 135°C To prevent damage to the bur, use an autoclavable bur block. Do not use: • dry heat sterilizer • cold sterilizers • ultrasonic cleaners • chemical disinfectors • immersion techniques • hand soaps • surface wipes • surface sprays • surgical milk • detergents • sterilizer bags containing disinfectants Refer to Daily Cleaning section for an exception in ultrasonically cleaning a specific chuck component.
LIMITS ON REPROCESSING	Repeated processing has minimal effect on these angles. End of life is normally determined by wear and damage due to use.
INSTRUCTIONS	
<b>WARNING</b>	Clean and sterilize angle as soon as practical before first use and after each patient.
CONTAINMENT AND TRANSPORTATION:	It is recommended that angles are reprocessed as soon as is reasonably practical following use.
PREPARATION FOR CLEANING:	Remove bur. Remove angle from motor to angle adapter.
CLEANING - AUTOMATED:	Washer-disinfectors are not recommended.
CLEANING - MANUAL:	Remove debris from external surfaces using a small brush and isopropyl alcohol. Dry thoroughly. Clean autochuck daily by removing bur from chuck and aerating with syringe air.
LUBRICATION:	Lubricate - For Lubricated Angles ONLY - See 'Lubrication' instruction section
DISINFECTION:	Use steam sterilization exclusively for complete sterility as outlined below.
MAINTENANCE:	Angle should be routinely maintained, checked for corrosion, worn parts, etc. and should be replaced on an as needed basis.
INSPECTION & FUNCTION TESTING:	See Installation, Operating Recommendations, and/or Troubleshooting sections of this manual.
PACKAGING:	Single: A standard sterilization packaging material must be used. Ensure that the pack is large enough to contain the item without stressing the seals. In sets: Angles may be loaded into dedicated instrument trays or general purpose sterilization trays. Ensure that cutting edges are protected and do not exceed the tray manufacturer's limit per tray. Wrap the trays using appropriate packaging materials and methods.
WRAPPED INSTRUMENT STERILIZATION:	Gravity Type Autoclave: • Minimum of 15 minutes at 132° C • Minimum of 30 minutes at 121° C Pre-Vacuum Autoclave: • Minimum of 4 minutes at 132° C Do not exceed 135° C
DRYING:	Dry the angle for 30 minutes minimum using the sterilization dry cycle and allow the angle to cool to room temperature in bag prior to use. If moisture is present, increase your sterilizer dry cycle appropriately.
STORAGE:	Store in bag after sterilization until ready to use.
ADDITIONAL INFORMATION:	Do not exceed the sterilizer manufacturer's guidelines for load capacity. Use only paper or paper/plastic bags.
MANUFACTURER CONTACT:	See first or last panels of this manual.

### DAILY CLEANING - FOR LUBRICATED MANUAL FRICTION GRIP CHUCK ANGLE ONLY

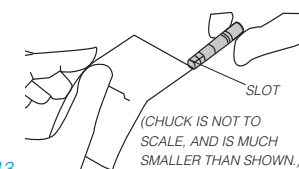
#### PREVENTIVE MAINTENANCE FOR THE BALL BEARING FRICTION GRIP MANUAL CHUCK ANGLE

- Pull handle back on manual bur tool (Fig. 12), StarDental® Part #203108, and slide open end of tool onto head of angle as shown above; release spring loaded handle and seat shaft of tool into the opening in the rear of angle head.



**NOTICE** Be careful to keep bur tool aligned with handpiece. If tool is side-loaded while engaged in chuck, tool may be damaged.

- To unlock chuck, StarDental Part #203036, turn manual bur tool handle counterclockwise and remove bur if still in place. Continue turning until rear of chuck emerges from angle.
- Remove bur tool and turn chuck with fingers to free.
- Clean chuck thoroughly with isopropyl alcohol or place in ultrasonic cleaner. Run a thin piece of paper through each of the three slots in the chuck to remove any debris (Fig 13).
- Reinstall chuck by reversing Steps 1 and 2.



### TROUBLESHOOTING

#### Problem: BUR LOCKS and/or SLIPS IN CHUCK

- Cause: Debris buildup in chucking mechanism  
Correction: Aerate with syringe air
- Cause: Use of non-ISO burs  
Correction: Always use ISO burs

NOTE: Always use ISO burs to prevent locking and slipping of burs in angle. If a problem persists, contact dealer for further assistance; or, contact StarDental Technical Service at 1-866-DTE-INFO.

## REPLACEMENT PART NUMBERS

ALWAYS INSIST ON STARDENTAL PARTS FOR BEST PERFORMANCE.

DESCRIPTION	ITEM NUMBER
<i>TITAN BALL BEARING FRICTION GRIP AUTOCHUCK ANGLE</i>	
Titan 3.....	LubeFree: 264151 ..... Lubricated: 264149
Titan T.....	LubeFree: 263954 ..... Lubricated: Not Available
Angle Cartridge .....	LubeFree: 264096 ..... Lubricated: 264095
Transmission Gear.....	LubeFree: 263960 ..... Lubricated: 264093
End Cap.....	264097
Angle Disconnect Wrench.....	203048
Auto Latch End Cap Wrench.....	261339
<i>TITAN BALL BEARING FRICTION GRIP MANUAL CHUCK ANGLE</i>	
Titan 3.....	LubeFree: 262740
Angle Cartridge .....	LubeFree: Not Available... Lubricated: 259352
Angle Cartridge AND Transmission Gear Assembly ..	LubeFree: Not Available... Lubricated: 261672
Transmission Gear.....	LubeFree: 262724 ..... Lubricated: 259008
End Caps (Pkg. of 2).....	Not Available
Chuck .....	203036
Hex Drive Manual Bur Changing Tool.....	203108
Titan 3 BB Motor-to-Angle Adapter .....	264073
Titan T BB Motor-to-Angle Adapter .....	263970
Angle Disconnect Wrench.....	203048
DentaLube II .....	262539

## DENTALEZ

### IMPORTANT NOTICE ABOUT RETURNING PRODUCT TO DENTALEZ INC.

Anyone wishing to return any DENTALEZ Inc. product to a DENTALEZ facility MUST obtain the proper RETURN AUTHORIZATION NUMBER from the Customer Service Department. The RA Number must appear clearly marked on both the outside and inside of the returned product carton. When calling for a return authorization number you will be asked to provide the following information:

- |                      |  |
|----------------------|--|
| To Obtain A          | 1. Product Name, Model Number or Part Number |
| Return Authorization | 2. Serial Number of Product                  |
| Number Call          | 3. Dealer Return Purchase Order Number       |
| 1-866-DTE-INFO       | 4. Reason For Return                         |
|                      | 5. Copy of Invoice Showing Purchase          |

Items will be evaluated. Return Authorization Number is not a guarantee for credit. Your cooperation with this procedure will help us expedite processing of any returns.

**FOR NEW PRODUCTS, MANUALS AND TECHNICAL INFORMATION, CALL 1-866-DTE-INFO OR VISIT OUR WEB SITE @ WWW.DENTALEZ.COM**

### LIMITED WARRANTY

DENTALEZ warrants the Titan Lubricated Friction Grip Chuck Angles for 3 months from the date of purchase\*; and the Titan LubeFree Friction Grip Chuck Angles for 1 year from the date of purchase\*:

Please note the following additional terms of our warranty and return policy:

- Warranty covers manufacturing defects only and does not cover defects resulting from abuse, accidents, misuse, improper handling, cleaning, care or maintenance or the failure to follow or observe our operating/use, maintenance and/or installation instructions. Damage resulting from the use of chemicals, cleaners, disinfectants or sterilization is not covered under this warranty nor is normal wear and tear. Failure to use authorized parts or an authorized repair facility voids this warranty.
- Liability is limited to repair or replacement of the defective part(s) or products at our sole discretion. All other liabilities, in particular liability for damages, including, without limitation, special, exemplary, consequential or incidental damages are excluded
- THIS WARRANTY IS IN LIEU OF ALL OTHER WARRANTIES, EXPRESSED OR IMPLIED, INCLUDING ANY IMPLIED WARRANTIES OF MERCHANTABILITY OR FITNESS FOR A PARTICULAR PURPOSE. NO EMPLOYEE, REPRESENTATIVE OR DEALER IS AUTHORIZED TO CHANGE THIS WARRANTY IN ANY WAY OR TO GRANT ANY OTHER WARRANTY.

\*Provided conditions in warranty are met.

### WARRANTY REGISTRATION

Please visit the website below to register your StarDental product. This will ensure proper registration and prompt and accurate service should any of your purchases need evaluation or repair during the warranty period.

StarDental Products: [WWW.DENTALEZ.com/warranty](http://WWW.DENTALEZ.com/warranty)