





Doctor: Address: Phone No.: Dealer: Address:	<hr/> <hr/> <hr/> <hr/> <hr/>
--	-------------------------------

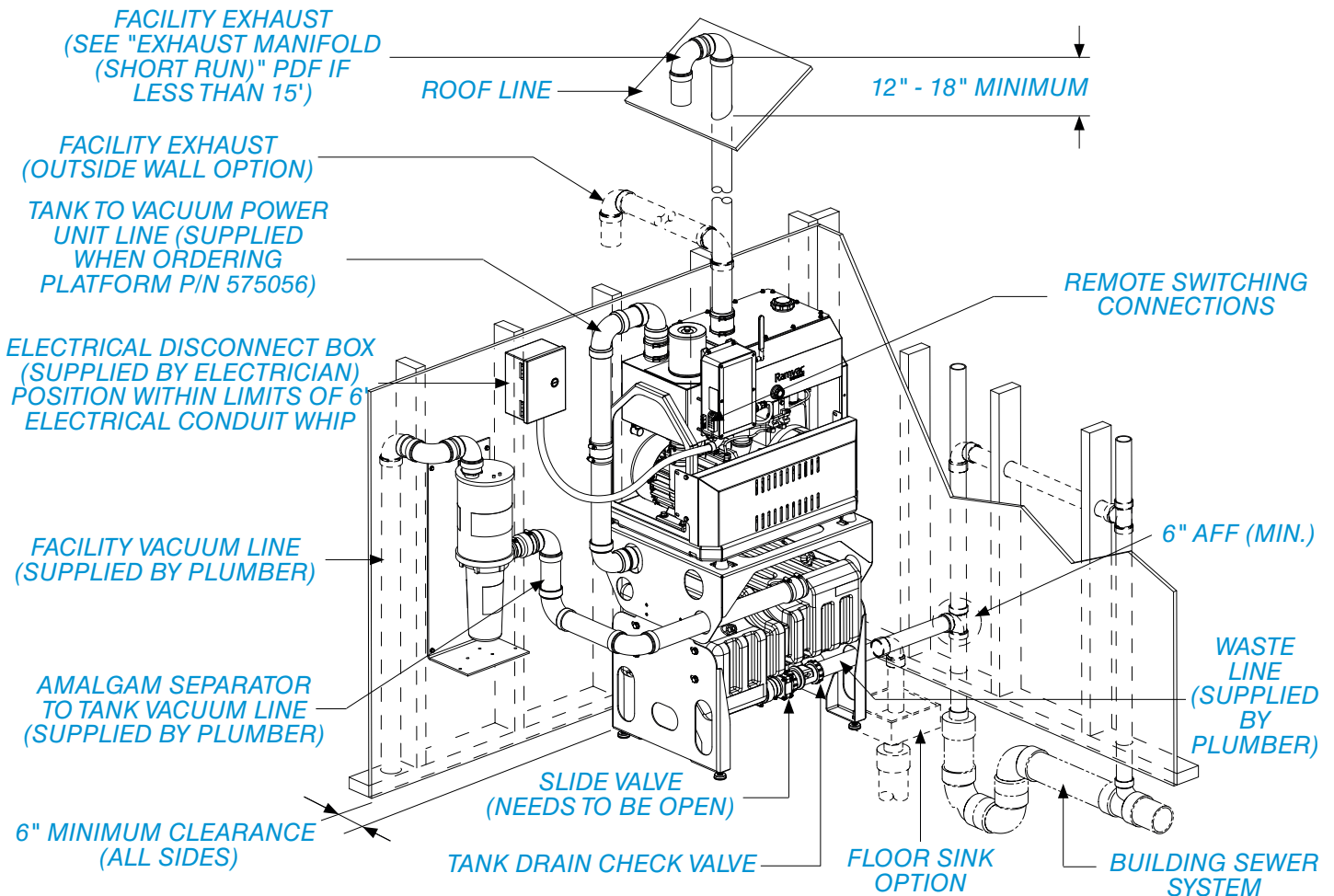
Check <input checked="" type="checkbox"/> Vacuum Model Being Installed:	<input type="checkbox"/> RV5-2	<input type="checkbox"/> RV7-2
---	--------------------------------	--------------------------------

**NOTICE**

 This information is not intended to replace the information found in the **User Manual**. Refer to the **User Manual** for full installation, safety and precautions.

 **ATTENTION:** It is recommended that this equipment be installed by a licensed electrical/plumbing contractor only. **All installations must conform to local and national codes.**

## EQUIPMENT ROOM LAYOUT (VACUUM WITH 15-GALLON TANK STACKED)



## PLUMBING

### FACILITY EXHAUST LINES

- 2" schedule 80 CPVC, or metal (not tar coated) with DWV fittings or equivalent. (Option: schedule 40 PVC or equivalent after first 10' of run).
- Slope: All horizontal lines toward the vacuum unit, a standard plumbing slope.
- Minimum exhaust length = 15' from Ramvac® pump to outside end. See “**Exhaust Manifold (Short Run)**” PDF if less than 15'.
- Run dedicated exhaust line for each Ramvac unit installed.
- Do not connect to plumbing vents.
- Lines must be installed to prevent condensation.
- Turn outside end down toward ground and screen to prevent entry of water, debris and creatures. Locate to prevent exhaust from entering building.

### FACILITY VACUUM LINES FROM OPERATORIES

- 2" (or larger) schedule 40 PVC with DWV fittings or equivalent.
- Minimum slope 1/4" per 10'.

### TANK TO VACUUM POWER UNIT LINE & AMALGAM SEPARATOR TO TANK VACUUM LINE

- 2" schedule 40 PVC with DWV fittings or equivalent.
- Use new, clean pipe to connect tank to vacuum power unit and amalgam separator to tank vacuum line. DO NOT reuse old or existing pipe.

### TANK DRAIN LINE

Waste pipe, slide valve and drain check valve:

- 1½" schedule 40 PVC with DWV fittings.
- Minimum slope 1/4" per 10'.
- Use only Ramvac supplied 1½" drain check valve.
- Drain into building sewer system.

# PREINSTALLATION GUIDE

# Ramvac

## PLACEMENT

- Equipment will release 2,673 BTU per hour into room. Ventilation required for room to remain between 32°F to 104°F (0°C to 40°C). Additional forced air and HVAC must be used if ambient temperatures do not fall into this range.
- Protect from water; controls and motor are NOT waterproof.
- Allow 6" minimum clearance on all sides for all units.
- If unit is placed in an area adjacent to office space, sound eliminating techniques should be considered for the unit.

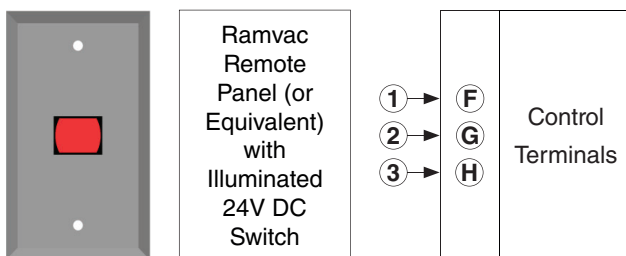
## ELECTRICAL

### HIGH VOLTAGE

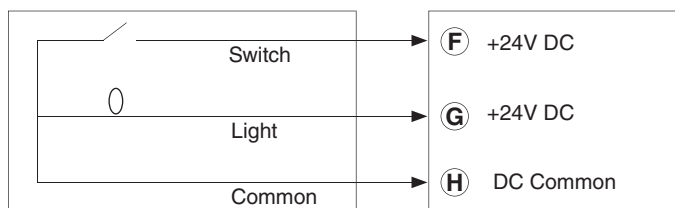
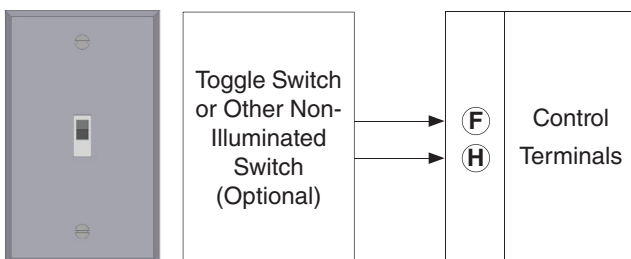
- Install a dedicated electrical circuit of sufficient capacity (see [SPECIFICATIONS & SITE REQUIREMENTS](#) table).
- Any means provided to isolate this device from the supply mains shall isolate all poles simultaneously. The disconnection means and overcurrent protection are to be provided by the installer. This device should always be attached to a dedicated circuit with appropriate wiring and circuit protection.

### LOW-VOLTAGE REMOTE SWITCHING (RECOMMENDED)

- Maximum wire length for low-voltage, 18-gauge wire is 500 feet.

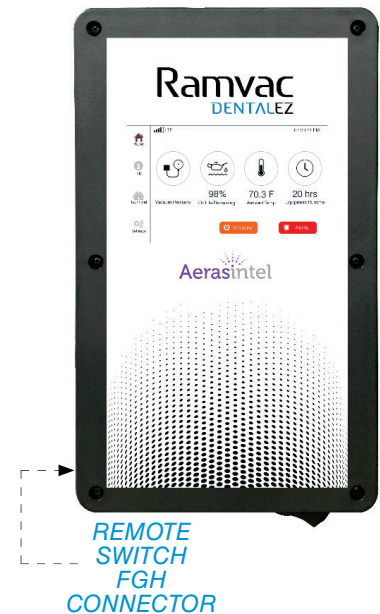


### LOW-VOLTAGE REMOTE SWITCHING (ALTERNATIVE)



Illuminated Remote Switch

### CONTROL PANEL




## SPECIFICATIONS & SITE REQUIREMENTS

	RV5-2	RV7-2
Max Users	5	7
Phase	1	1
Horsepower (kW)	3.0 (2.2)	3.0 (2.2)
Voltage Rating (Min/Max)	230 (208/253)	230 (208/253)
Frequency (Hz)	60	60
Breaker Rating Size (Amps)	20	20
Full Load Amps	16.0	16.0
Fusetron Size (Recommended)	FRN 25	FRN 25
THHN Wire Size (AWG)	12	12
HR (Heat Released to Room) (BTU)	2,673	2,673
Sound Levels (dBA)	74	75
Weight (lbs)	345	345
Operating Temperature (Min/Max)	32°F / 104°F	32°F / 104°F
Operating Relative Humidity Range	0-95%, No Condensing Moisture	0-95%, No Condensing Moisture
Shipping/Transport Temperature (Min/Max)	-20°F / 165°F	-20°F / 165°F
Operating Atmospheric Pressure Range	63-105 kPa	63-105 kPa

## PRODUCT DIMENSIONS

	RV5-2/RV7-2	15-GALLON TANK	RV5-2/RV7-2 & 15-GALLON TANK STACKED	50-GALLON CYLINDRICAL TANK
Nominal Width	26" (660 mm)	29" (737 mm)	33" (838 mm)	26" (660 mm)
Nominal Depth	19" (483 mm)	19" (483 mm)	21" (533 mm)	26" (660 mm)
Nominal Height	31" (787 mm)	24" (610 mm)	59" (1,499 mm)	62" (1,575 mm)
Drain Valve Centerline to Floor	N/A	8" (203 mm)	8" (203 mm)	5" (127 mm)

ETL CLASSIFIED  
 Conforms to:  
 ANSI/AAMI STD ES60601  
 Certified to:  
 CAN/CSA STD C22.2 NO. 60601-1  
**Intertek**  
 4007136

© 2023 DENTALEZ Alabama, Inc. DENTALEZ is a registered trademark of DENTALEZ, Inc. Ramvac is a registered trademark of Ramvac Dental Products, Inc. AERAS, Inc. is a separate corporation from DENTALEZ, Inc.