



**⚠ ALWAYS READ AND FOLLOW ALL SAFETY/REGULATORY INFORMATION AND NOTIFICATIONS PROVIDED IN THE USER MANUAL.**

### MAINTENANCE OVERVIEW

Compressor preventive maintenance is simple, clean and inexpensive. It can help ensure your system provides years of predictable performance. While most maintenance tasks can be performed by the user, Ramvac recommends having all service and maintenance conducted by a dealer service technician.

#### Key Points for Trouble-free Operation

- Follow the recommended **PREVENTIVE MAINTENANCE SCHEDULE**.
- Check the coalescing and particulate filter element service indicators every month.
- Keep compressor clean and free of dirt.
- Keep area surrounding compressor free of debris.
- Maintain a controlled ambient temperature between recommended levels. High temperatures will shorten the life of the air compressor.

### CLEANING INSTRUCTIONS

1. Always disconnect the power from the equipment prior to cleaning.
2. Some parts/components on the compressor get hot during operation; provide the equipment ample time to cool prior to cleaning.
3. All components can be safely wiped down with a damp cloth, wet with water. Using any cleaners or harsh chemicals to clean this equipment is NOT recommended; potentially harmful effects have not been evaluated.
4. Do not heavily wet electrical components.
5. Allow equipment to air dry or dry with clean, soft cloth.

### PREVENTIVE MAINTENANCE SCHEDULE

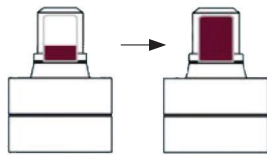
This is the recommended schedule for a compressor in a clean, dry environment. Any site other than specified will decrease maintenance time exponentially.

Test for Air Leaks	First Week and Annually
Replace Intake Filter	Annually
Replace Coalescing Filter	Annually or when filter <b>ELEMENT SERVICE INDICATOR</b> moves to completely red while running
Replace Particulate Filter	Annually or when filter <b>ELEMENT SERVICE INDICATOR</b> moves to completely red while running
Inspect Dryer	Annually
Test Safety Valve	Annually
Replace Dessicant Cartridges	Every 5 Years

#### FILTER WITH ELEMENT SERVICE INDICATOR

Know when to replace your elements. Replace an element when the indicator turns fully red. (Replace an element annually, even if the red indicator does not reach the top).

DIFFERENTIAL PRESSURE:  
7.25 PSI (0.05 MPA) OR LESS



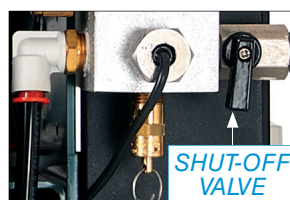
(THE INDICATOR TIP IS VISIBLE).

DIFFERENTIAL PRESSURE:  
14.25 PSI (0.1 MPA) OR MORE

(THE INDICATOR REACHES THE TOP).

### TEST FOR AIR LEAKS

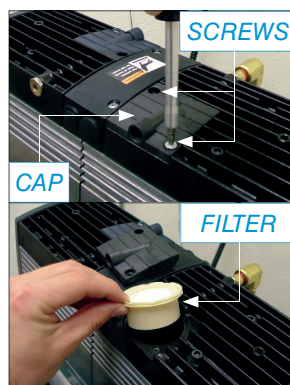
1. CLOSE shut-off valve.
2. Run compressor until it shuts OFF with a tank pressure of 115 PSI/793 kPa showing on the Home screen of the control panel LCD.
3. On the Technical screen, press and enable **MAINTENANCE MODE\***.
4. Let compressor sit for 5 minutes.
5. Check tank pressure. If pressure drop is more than 5 PSI/34 kPa in a 5-minute time period, leaks must be repaired. Repair if needed.
6. OPEN shut-off valve.
7. On the Technical screen, press and disable **MAINTENANCE MODE\***. Press **NO** on the pop-up dialogue box.
8. On the Home screen, press **STANDBY** to turn the system ON.



### REPLACE INTAKE FILTER

**NOTE:** For C3-12(SS) or C4-12(SS) models, follow Replacement Part Instructions provided with replacement kit.

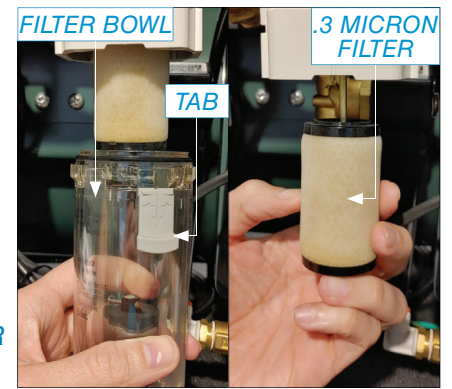
1. On the Technical screen of the control panel LCD, press and enable **MAINTENANCE MODE\***.
2. Remove intake filter cap by removing 2 screws with a Torx 25 screwdriver.
3. Remove intake filter and discard.
4. Install replacement filter and replace intake filter cap.
5. On the Technical screen, press **SERVICE >**.
6. On the Service screen, press **FILTER PACK**.
7. On the Filter Pack screen, press **REPLACE**. Press **OK** on the pop-up dialogue box.
8. On the Technical screen, press and disable **MAINTENANCE MODE\***. Press **NO** on the pop-up dialogue box.
9. On the Home screen, press **STANDBY** to turn the system ON.



### REPLACE COALESCING FILTER

**NOTE:** All compressor models use the same coalescing filter.

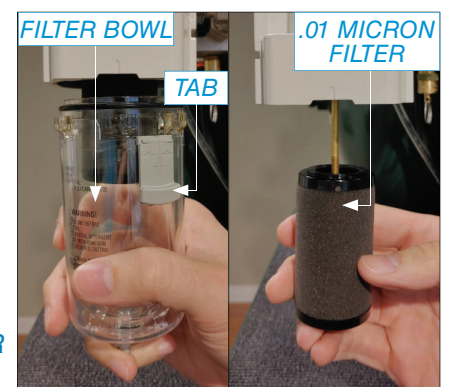
1. On the Technical screen of the control panel LCD, press and enable **MAINTENANCE MODE\***.
2. Pull tab down and turn filter bowl slightly right or left to remove.
3. Remove filter by turning completely out.
4. Install new .3 micron filter.
5. Position filter bowl, push up slightly, and turn left or right into place. Tab will snap into place.
6. On the Technical screen, press **SERVICE >**.
7. On the Service screen, press **FILTER PACK**.
8. On the Filter Pack screen, press **REPLACE**. Press **OK** on the pop-up dialogue box.
9. On the Technical screen, press and disable **MAINTENANCE MODE\***. Press **NO** on the pop-up dialogue box.
10. On the Home screen, press **STANDBY** to turn the system ON.



### REPLACE PARTICULATE FILTER

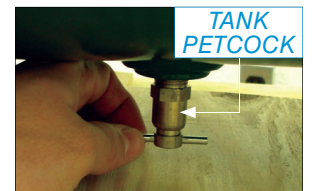
**NOTE:** All compressor models use the same particulate filter.

1. On the Technical screen of the control panel LCD, press and enable **MAINTENANCE MODE\***.
2. Bleed air from system.
3. Pull tab down and turn filter bowl slightly right or left to remove.
4. Remove filter by turning completely out.
5. Install new .01 micron filter.
6. Position filter bowl, push up slightly, and turn left or right into place. Tab will snap into place.
7. On the Technical screen, press **SERVICE >**.
8. On the Service screen, press **FILTER PACK**.
9. On the Filter Pack screen, press **REPLACE**. Press **OK** on the pop-up dialogue box.
10. On the Technical screen, press and disable **MAINTENANCE MODE\***. Press **NO** on the pop-up dialogue box.
11. On the Home screen, press **STANDBY** to turn the system ON.



### INSPECT DRYER

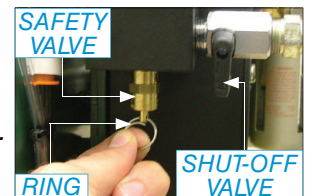
1. Run compressor until tank pressure of at least 45 PSI/310 kPa shows on the Home screen of the control panel LCD display.
2. On the Technical screen, press and enable **MAINTENANCE MODE\***.
3. Carefully open the tank petcock.
4. If no water drains from the tank when the valve is opened, the dryer is working; proceed to step 6.
5. If water drains from the tank when the valve is opened, the dryer is not working. Contact Ramvac at 866-DTE-INFO.
6. On the Technical screen, press and disable **MAINTENANCE MODE\***. Press **NO** on the pop-up dialogue box.
7. On the Home screen, press **STANDBY** to turn the system ON.



### TEST SAFETY VALVE

**⚠ CAUTION:** Bleed air from system before servicing. Excessive sound levels possible; hearing protection is recommended.

1. Run compressor until tank pressure of at least 45 PSI/310 kPa shows on the Home screen of the control panel LCD display.
  2. On the Technical screen, press and enable **MAINTENANCE MODE\***.
  3. Pull ring on safety valve located below the facility shut-off valve.
- NOTE:** A loud burst of escaping air will be heard when air is released from the safety valve.
4. If no air comes out of safety valve, the valve is defective and must be replaced immediately.
  5. If air comes out of safety valve, the valve is working properly; return compressor to service.
  6. On the Technical screen, press and disable **MAINTENANCE MODE\***. Press **NO** on pop-up dialogue box.
  7. On the Home screen, press **STANDBY** to turn the system ON.



### CHECK TANK HUMIDITY

1. On the Technical screen of the control panel LCD, press **SENSORS >** and scroll down (if needed) to view the tank humidity level.
2. Tank humidity level should read between 0-20% if running correctly.
3. If tank humidity level is above 20%, contact Ramvac at 866-DTE-INFO.

\*NOTE: Turning ON maintenance mode disables remote switching and puts the system in standby mode. Turning OFF maintenance mode enables remote switching, but does not return the system to ON mode.